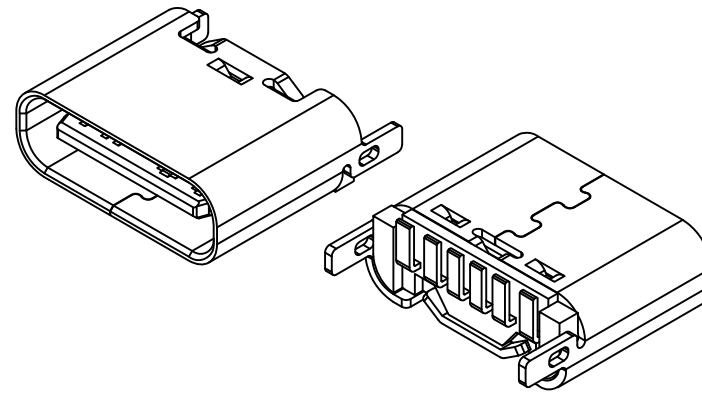


USB TYPE-C FULL-FEATURED RECEPTACLE INTERFACE PIN ASSIGNMENTS

PIN	Signal Name	Description	PIN	Signal Name	Description
A5	CC1	Configuration Channel	B12	GND	Ground return
A9	VBUS	Bus Power	B9	VBUS	Bus Power
A12	GND	Ground return	B5	CC2	Configuration Channel



MATERIAL:

- 1.HOUSING: LCP, GLASS FIBER FILLED, BK
- 2.CONTACT: COPPER ALLOY
- 3.SHELL: STAINLESS STEEL

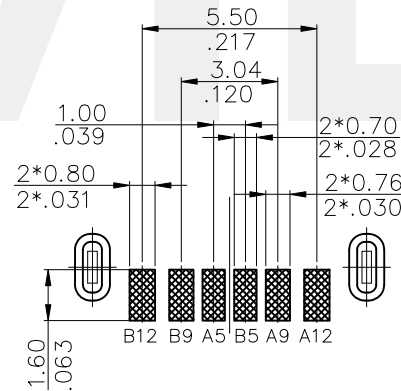
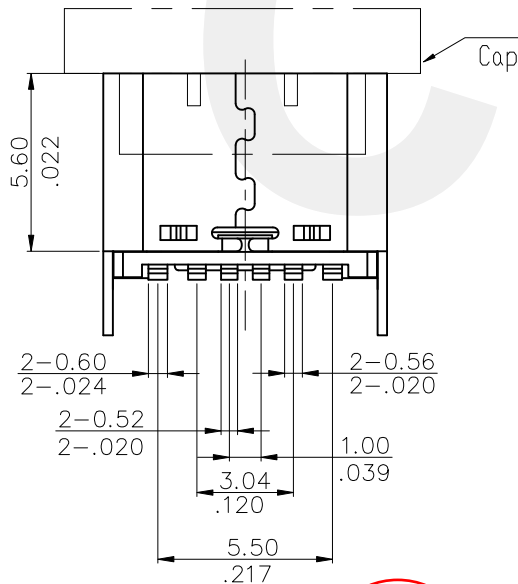
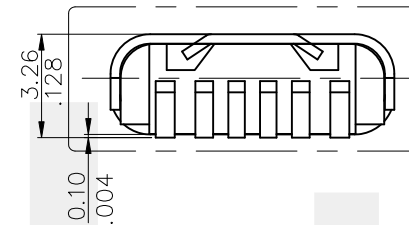
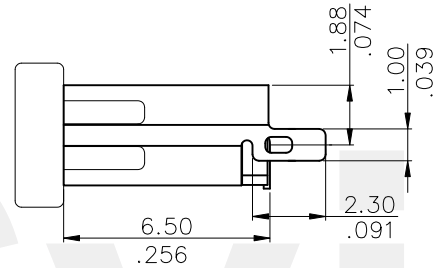
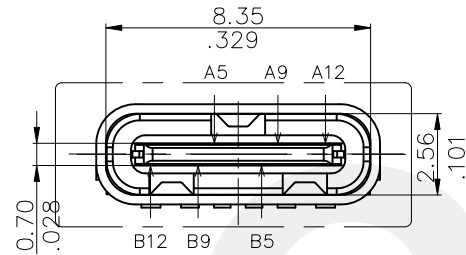
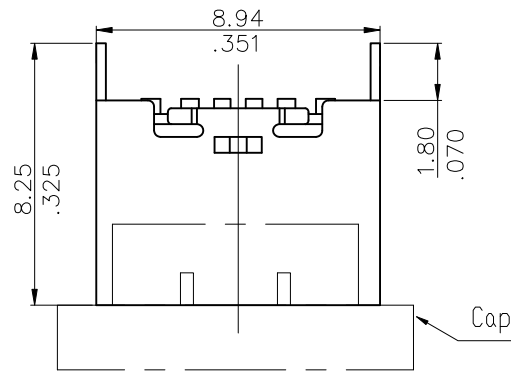
FINISH:

- CONTACT: SEE ORDER INFORMATION
SHELL: NICKEL PLATING

Ordering Code:

CU33 06 S * S D L R 001 -LF
 ① ② ③ ④ ⑤ ⑥ ⑦ ⑧ ⑨

- ① Series No.CU33
- ② No of Circuits:06Pin
- ③ S= Socket
- ④ Plating option:
 A= Gold Flash plated on Contact area,
 Matte Tin plated on Solderails,
 Nickel underplating over all
- ⑤ Shell Material & Plating:
 S=stainless steel NI Plated
- ⑥ Contact Material: D=Copper Alloy
- ⑦ Insulator Material & Color option:
 L=LCP Black
- ⑧ Packing R= Tape & Reel
- ⑨ -LF= For Lead Free IR Reflow Process



RECOMMENDED P.C.B. LAYOUT
TOLERANCE UNSPECIFIED ±0.05mm

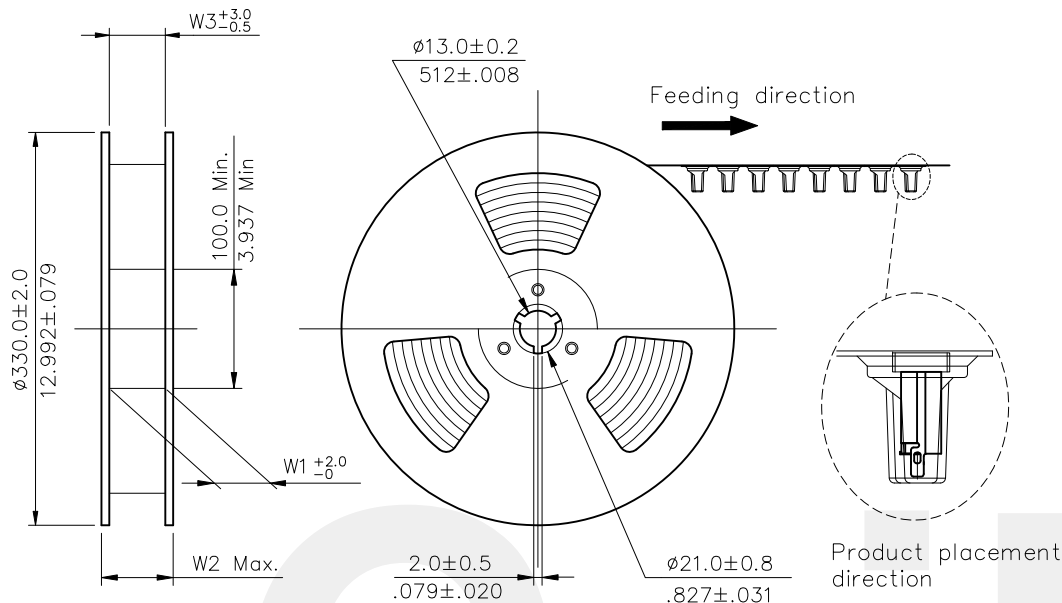
Lead Free Process RoHS Compliant

④					DATE	UNIT: mm / inch	TITLE:	瀚荃股份有限公司 CviLux Corporation
③					DRAWN BY: Annie	TOLERANCE UNLESS OTHERWISE SPECIFIED	CU33 TYPE C FEMALE H=5.6mm VERTICAL TYPE	
②					ENGINEER: Gavin	.X ± 0.25/.010 .X' ± 4'	MATERIAL:	
①	Annie	2021.7.20	ECND121024 REVISIONS	CHECKED BY: Keny	07/20-21'	.XX ± 0.20/.008 .X' ± 2'	FINISH:	
SYM	NAME	DATE	REVISIONS	APPROVED BY: Keny	07/20-21'	.XXX ± 0.10/.004 .XX' ±		DRAWING NO. CU33S01SB
								PART NO. CU3306S*SDLR001-LF
								SCALE 1 / 1
								SHEET 1 OF 2

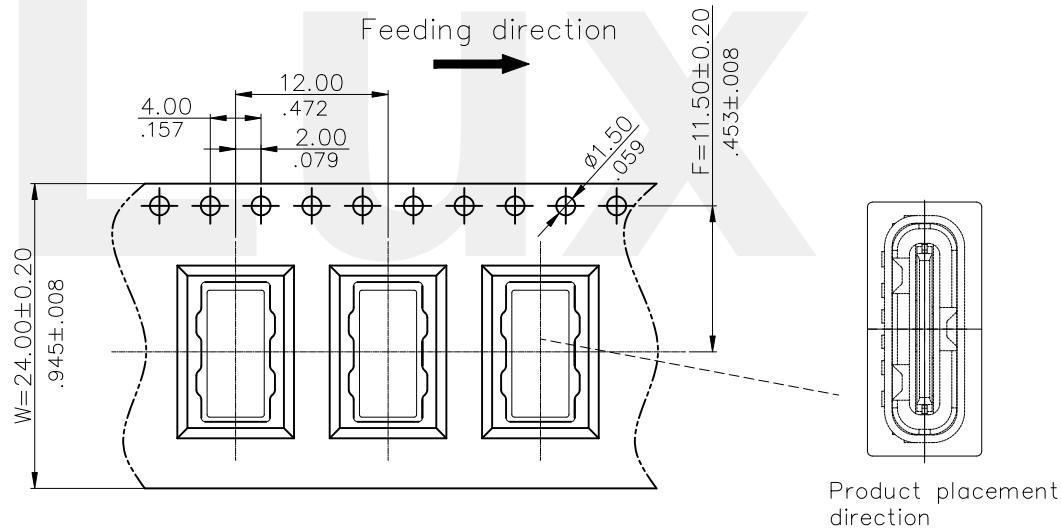
CIVILUX COUP
 2021.08.12
 ISSUED

NOTE :


- * Reel Material : HIPS
- * Carrier Material : Clear, Conductive Polystyrene Alloy
- * Cover Tape Material : Polyester
- * Cover Tape Peel Strength : 0.1N – 1.3N
- * Carrier camber is within 1mm in 250mm
- * All dimensions meet EIA-481-B requirements.
- * Quantity : 500 PCS/Reel



Dimension				Packing (Reel/Carton)
E	W1	W2	W3	
16.0(.630)	24.5(.965)	30.5(1.201)	24.5(.965)	12



Lead Free Process RoHS Compliant

4					DATE	UNIT: mm / inch	TITLE:	 瀚荃股份有限公司 CviLux Corporation
3					DRAWN BY: Annie	TOLERANCE UNLESS OTHERWISE SPECIFIED	CU33 TYPE C FEMALE H=5.6mm VERTICAL TYPE	
2					ENGINEER: Gavin	.X ± X' ± 1'	MATERIAL:	DRAWING NO. CU33S01SB
1	Annie	2021.7.20	ECND121024 REVISIONS		CHECKED BY: Keny	.XX ± .X' ±	FINISH:	PART NO. CU3306S*SDLR001-LF
SYM	NAME	DATE	REVISIONS		APPROVED BY: Keny	.XXX ± .XX' ±		SCALE
								SHEET 2 OF 2

CVILUX COUP
 2021.08.12
 ISSUED