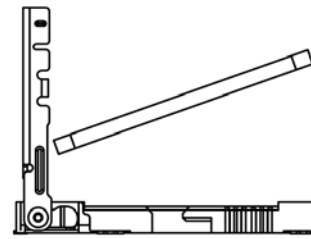
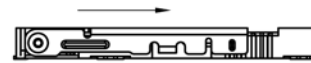


ROHS Compliance



STEP 1 INSERT NANO SIM CARD



STEP 2 PUSH THE SHELL



STEP 3 FINISH

REV.	ECN.NO.	MODIFY.CONTENT	DATE
A00	N171120E	NEW RELEASED	17/11/20

MATERIAL:

Insulator: High Temperature Thermoplastic, UL 94V-0.
 Contact: Copper Alloy
 SHELL: SUS

PLATING:

Contact: Plated 50u'' Ni Overall Contact ALL Au 1U,
 Shell: ALL NI 30U/MIN

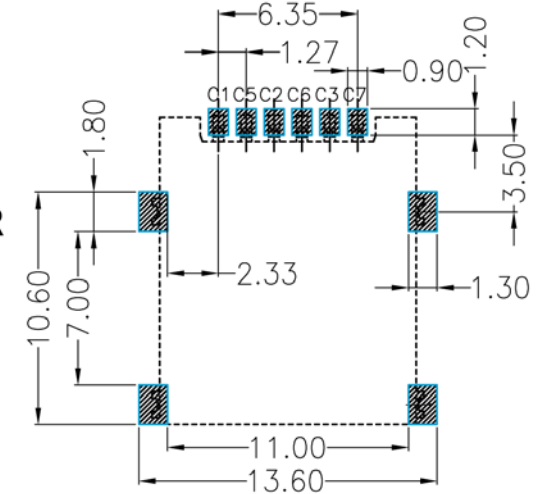
Electrical:

Current Rating :0.5mA AC/DC max.
 Voltage Rating :125V AC/DC
 Ambient Temperature Range :-20° C~+60° C
 Storage Temperature Range :-40° C~+70° C
 Ambient Humidity Range :95% R.H. Max.
 Contact Resistance:80m Ωmax.
 Insulation Resistance:100m Ωmin./100V DC
 Mating Cycles:5,000 Insertions
 Reflow peak temp.: 260° C ±5° C, 3~5 S

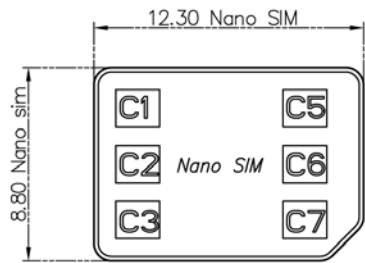
ORDER INFO.

NNSIM-06 XX- 14H-TR

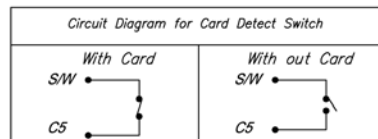
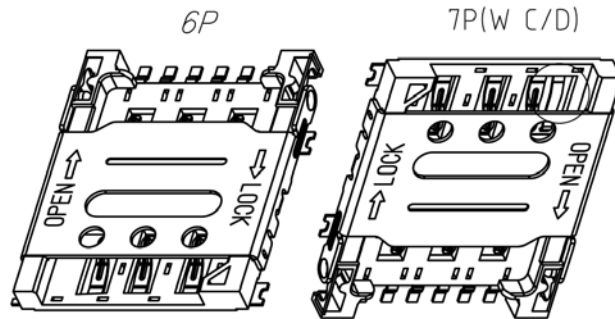
- 06:6P Position
- 07:7P Position
- 00:G/F Plated
- 15:15u'' Gold
- 14:1.4h Height
- H: Hinge Type



PCB 焊盘区
 RECOMMENDED PCB LAYOUT
 GENERAL TOLERANCE ±0.05

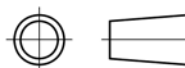


PIN NO.	PIN NAME
C1	VCC
C2	RST
C3	CLK
C5	GND
C6	VPP
C7	I/O



UNLESS TOLERANCE	
GENERAL	ANGLE
x. ± 0.38	x.* ± 3.0°
.x ± 0.25	.x* ± 2.0°
.xx ± 0.13	.xx* ± 1.0°
.xxx ± 0.05	.xxx* ± 0.5°

DRAW BY	Jason	11/20 2017
CHECK BY	JEFF	11/20 2017
APPROVE BY	JEFF	11/20 2017



SCALE	1:1	SHEET	1/2	UNIT	MM	REV: A
-------	-----	-------	-----	------	----	--------

TAITEK
 COMPONENTS CO., LTD

Part No : NNSIM-06XX-14H-TR

Tital : NANO SIM CONNECTOR, HINGE TYPE, H=1.4MM