

SPECIFICATION OF SURFACE MOUNT TYPE

1 .TYPE	DSX211G			
2 .NOMINAL FREQUENCY	38.400000	MHz		
3 .LOAD CAPACITANCE(CL)	8.0	pF		
4 .DRIVE LEVEL	10	μW	+/- 2	μW
5 .FREQUENCY TOLERANCE	+/- 10	$\times 10^{-6}$	at 25 deg.C	+/- 3 deg.C
6 .SERIES RESISTANCE	80	ohms	max.	/ CL = SERIES
7 .FREQUENCY CHARACTERISTICS OVER TEMPERATURE(ref. +25 deg.C)	+/- 20	$\times 10^{-6}$	/ -40 deg.C to	+85 deg.C
8 .OPERATING TEMPERATURE RANGE	-40	deg.C	to	+85 deg.C
9 .STORAGE TEMPERATURE RANGE	-40	deg.C	to	+85 deg.C
10 .SHUNT CAPACITANCE(C0)	2.0	pF	max.	
11 .INSULATION RESISTANCE	500 Mohms min. at 100V DC			
12 .OVERTONE ORDER	Fundamental			
13 .DIMENSIONS	Refer to Fig-1			
14 .PART NUMBER	257613			

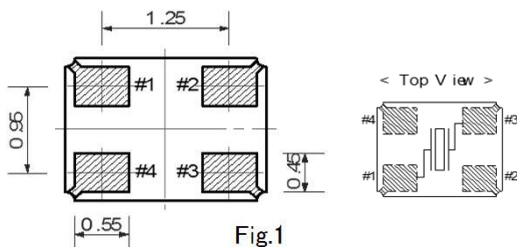
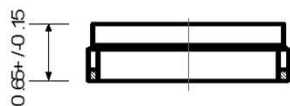
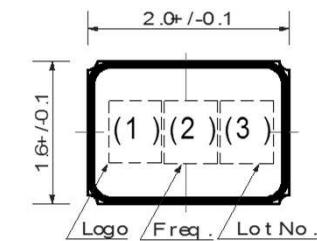


Fig.1

(1)Logo, (2)Frequency and Manufacturing Location

Producing District	(1)Logo	(2)Frequency
INDONESIA	D	38

* Made in INDONESIA : Under Bar with (1)Logo

(3)Lot No.

unit : mm
Tolerance : +/-0.1

Pin #1 #3 connected quartz element
Pin #2 #4 is not connected with anything.