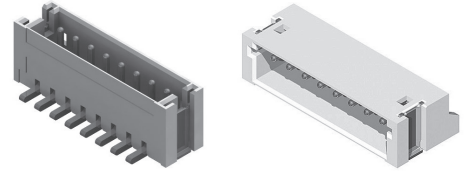


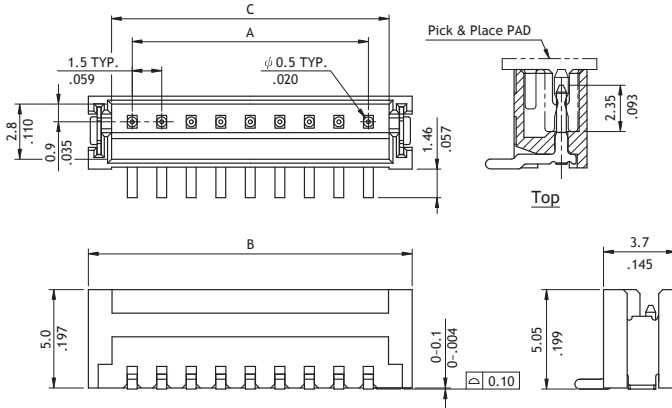
CI15 Series 1.50mm(.059") Wire to Board Connectors SMT Headers

- ⊙ Polarization and Low-profile
- ⊙ Locking slots provide secure mating
- ⊙ Fixed tabs provide PCB hold-down and strain-relief for SMT tails
- ⊙ Insulator: High temperature plastic UL 94V-0, Color Nature
- ⊙ With Tin plated SMT type contact
- ⊙ Mate with CI15 Housing

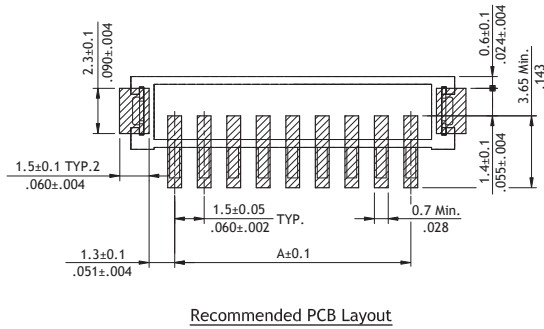


RoHS Compliant   

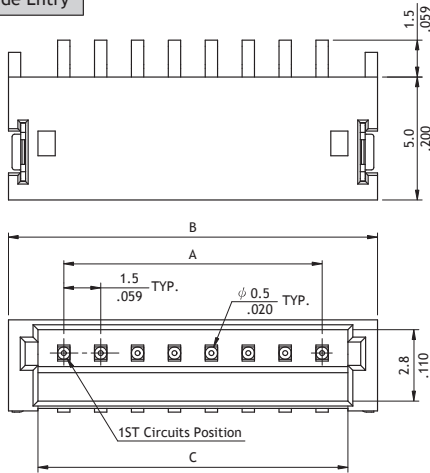
Top Entry



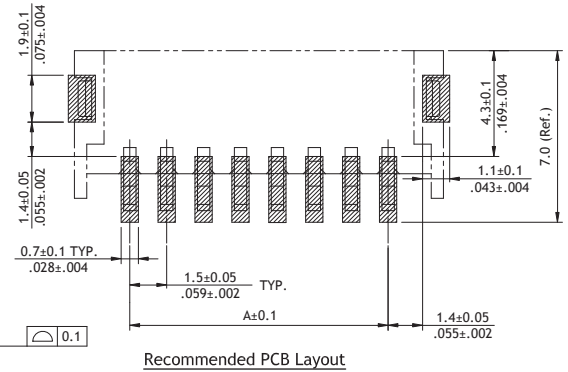
A = 1.5 \* No. of Spaces  
 B = A + 4.5  
 C = A + 2.1



Side Entry



A = 1.5 x No. of Spaces  
 B = A + 4.5  
 C = A + 2.1



Ordering Code

① ② ③ ④ ⑤ ⑥ ⑦ ⑧  
**CI15 15 M 1 V R 0 - NH**

- ① Series No.
- ② No. of Circuits: 02 to 15
- ③ M = SMT Type
- ④ Plating Code: 1 = Matte Tin over Nickel
- ⑤ Type: V = Top Entry  
H = Side Entry

- ⑥ Packing Options:  
R = Tape & Reel  
T = Tube
- ⑦ Other Options: 0 = Standard  
\*Special options consult manufacturer
- ⑧ Process: -NH = For Lead Free soldering process and Halogen-Free